



MONTHLY Report

For the month of
FEBRUARY
2 0 2 5



During the Reported Month, PPHI Sindh Provided the following **Free of Cost** Services

Total Number of Health Facilities Managed by PPHI Sindh

Type of Health Facility	No. of HFs
Secondary care and RHCs	46
BHU Plus	304
MCH	21
BHU	477
Others	590
Grand Total	1,438

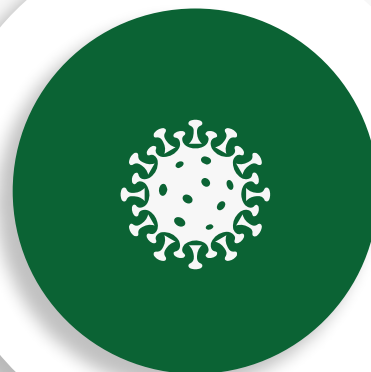


Free OPD
Services

**3.5
Million
Patients**



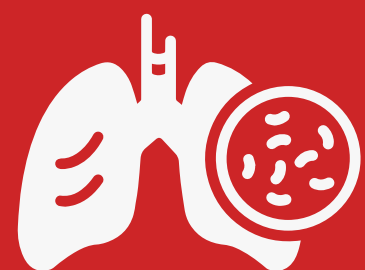
Malnutrition Cases
Under 5 years
**196,754
Treated**



Diarrhea
Under 5 years
70,940

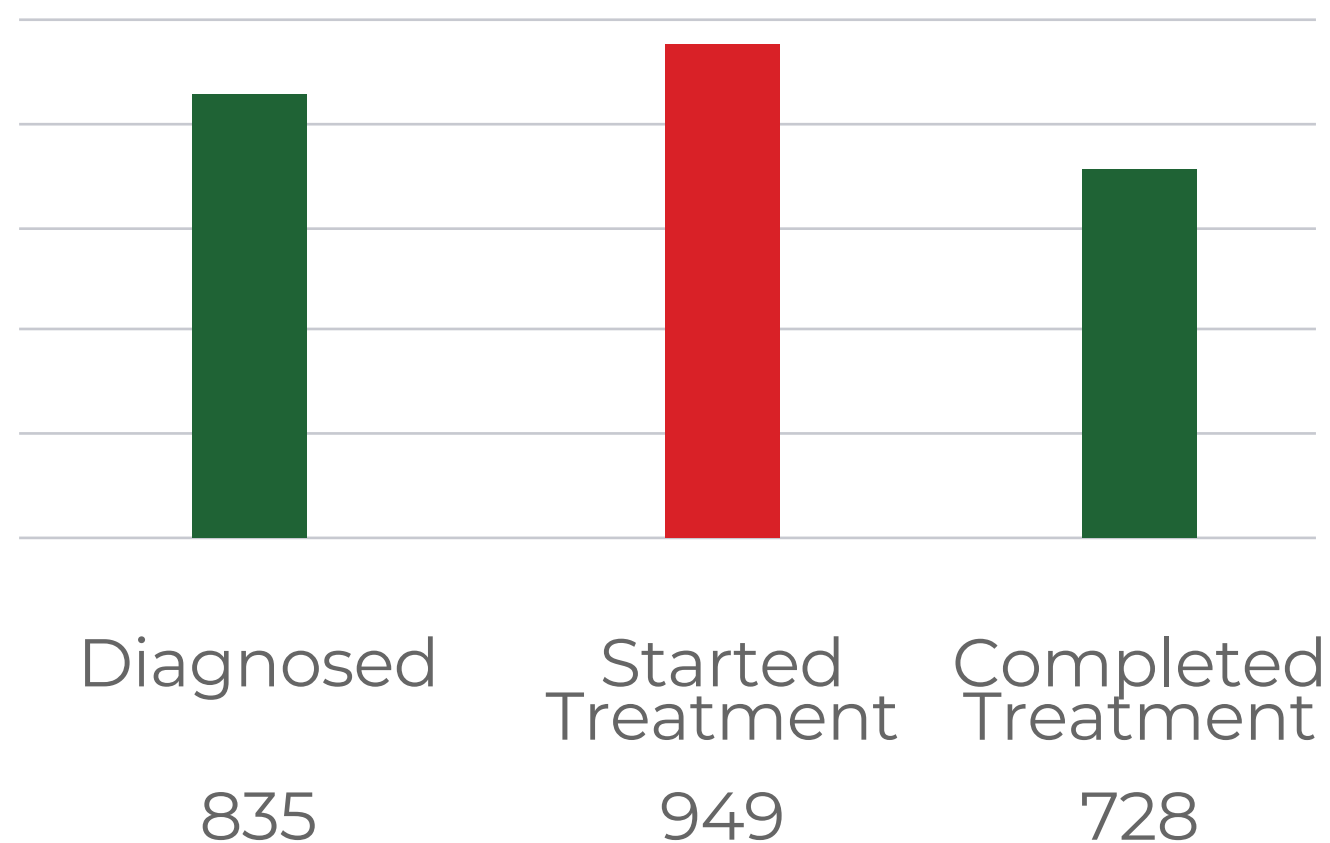


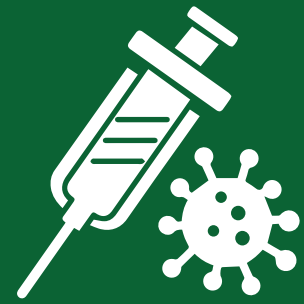
Dysentery
Under 5 years
7,254



TB
Suspects
75,233

No. of Individuals Managed for TB

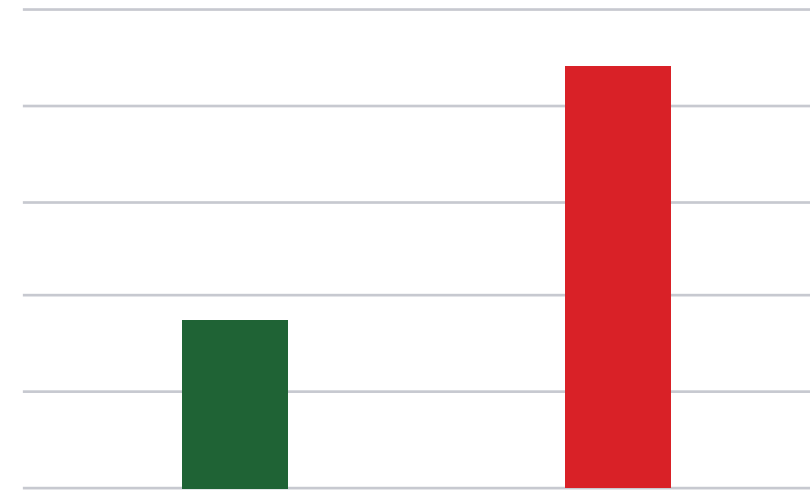




Patients
Vaccinated For
Hepatitis

226,050

No. of Individuals
Screened for HEP B, C



Hepatitis B Hepatitis C
114,836 117,990



Suspected
Malaria

199,541



Rapid Diagnostic
Test (RDT)
18,5071



Slides examined
15,248

No. of Individuals
Tested Positive for Malaria

MP +ve



1,117

Slides P.
Falciparum +ve
348

Sides of P.
Vivax +ve
769

Diagnostic Services, including ultrasound



1,197,766



Maternal
Health
430,148



**ANC
VISITS**

ANC-1	ANC-1 <small>Women with Hb. <10 g/dl</small>	ANC - Re Visits
68,949	28,641	211,198

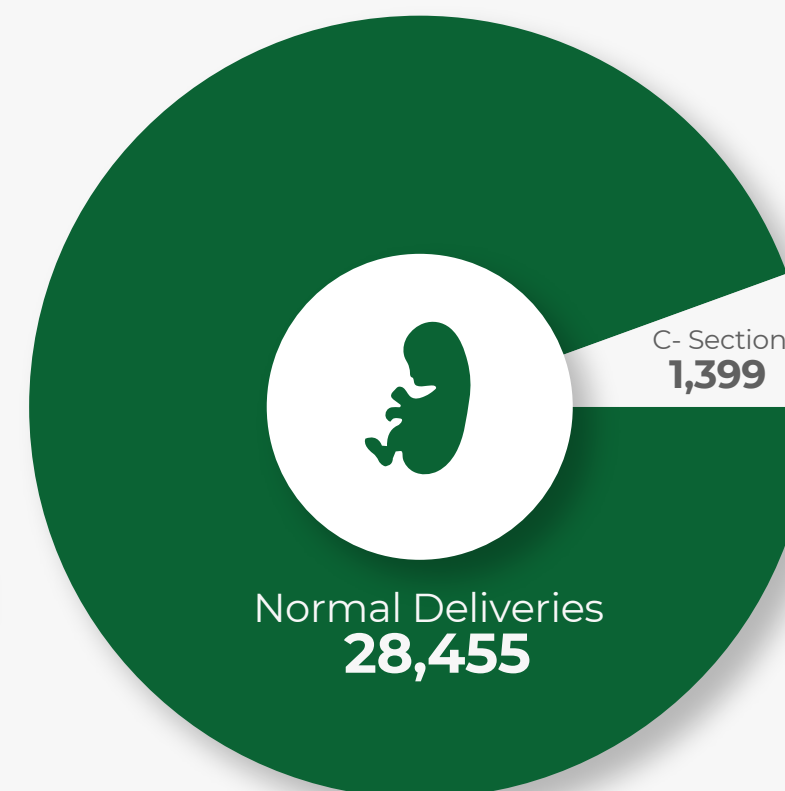


**PNC
VISITS**

PNC-1	PNC - Rev Visits
38,372	81,775



Total Deliveries
Conducted
29,854



KMC Admissions
2,526



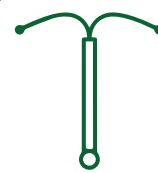
FP
Visits
104,411



LARC
13,880



Immediate
PPFP
9,794



IUCD
11,680

Implants
2,200

EPI Program in Dadu and Khairpur



Total Children Fully
Immunized

13,370

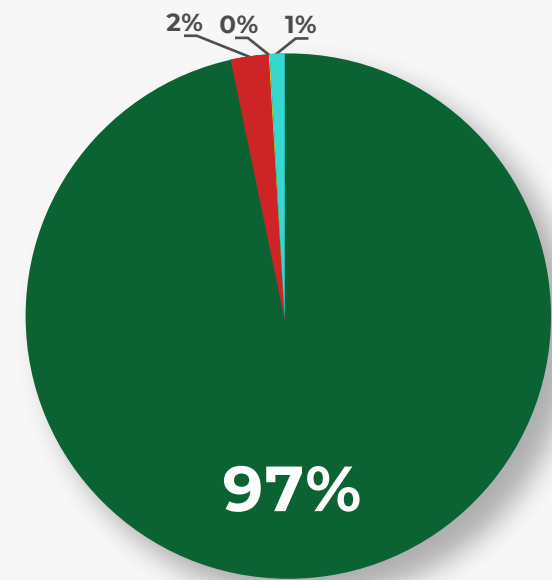


Total Birth Dose
Vaccination

11,497

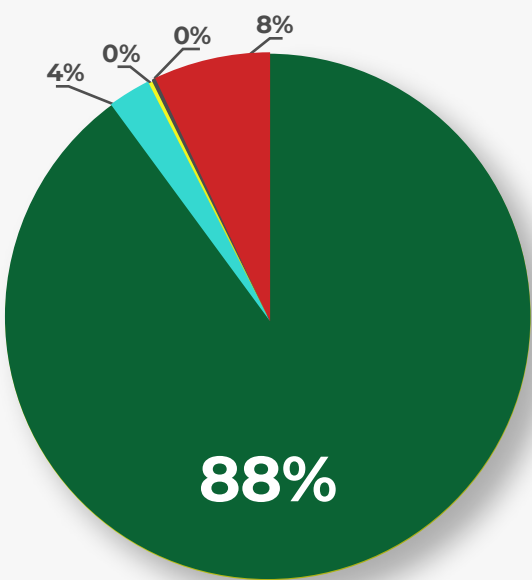
Nutrition Program Updates

OTP Key Performance Indicators



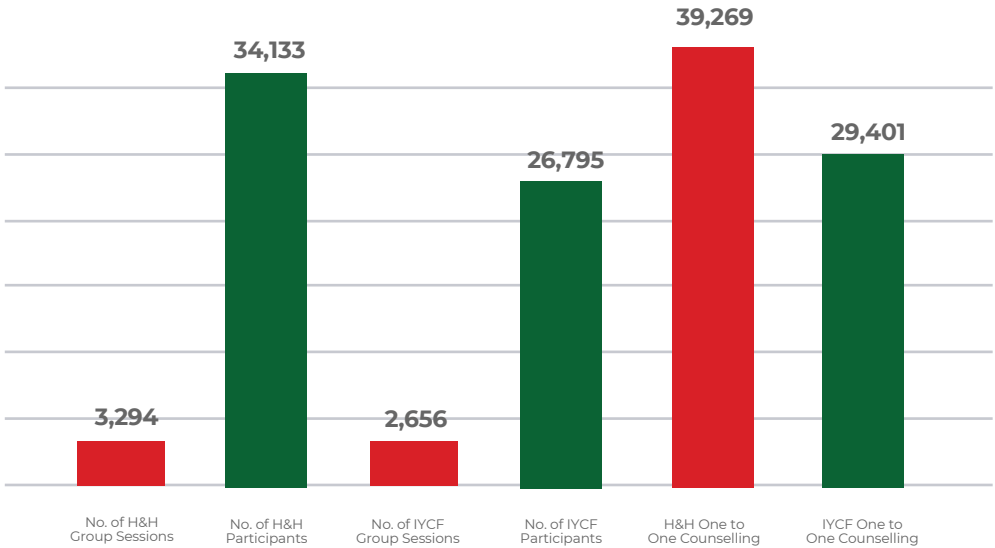
Cured Default Death Non-Cured

Nutrition Stabilization Center Performance



Cured LAMA Death Non-Cured Medical Transfer Out

Awareness Sessions & Participants



Comparative Data for RHCs and Others between the months of Feb-24 and Feb-25

Comparative Data for RHCs and Others between the months of FEB-24 and FEB-25										
Indicators	RHCs and above				BHU Plus, BHU, GDs and Others				Total	
	Feb-24	Feb-25	Difference	%	Feb-24	Feb-25	Difference	%	Feb-24	Feb-25
OPD	521,551	600,836	79,285	15	2,851,916	2,937,953	86,037	3	3,373,467	3,538,789
FP	9,063	10,303	1240	14	90,009	94,108	4,099	5	99,072	104,411
ANC-1	10,481	11,190	709	7	51,870	57,759	5,889	11	62,351	68,949
NVD	3,434	4,238	804	23	23,176	24,217	1041	4	26,610	28,455
C-Sections	1,284	1,399	115	9	0	0	0	0	1,284	1,399
Lab	215,562	223,835	8,273	4	1,062,913	883,424	-179,489	-17	1,278,475	1,107,259
Ultrasound	26,632	24,970	-1662	-6	63,553	65,537	1,984	3	90,185	90,507
X-ray	7,458	9,961	2,503	34	2,048	1,752	-296	-14	9,506	11,713
LARC	2,112	2,082	-30	-1	15,577	3,919	1871	12	17,689	13,880